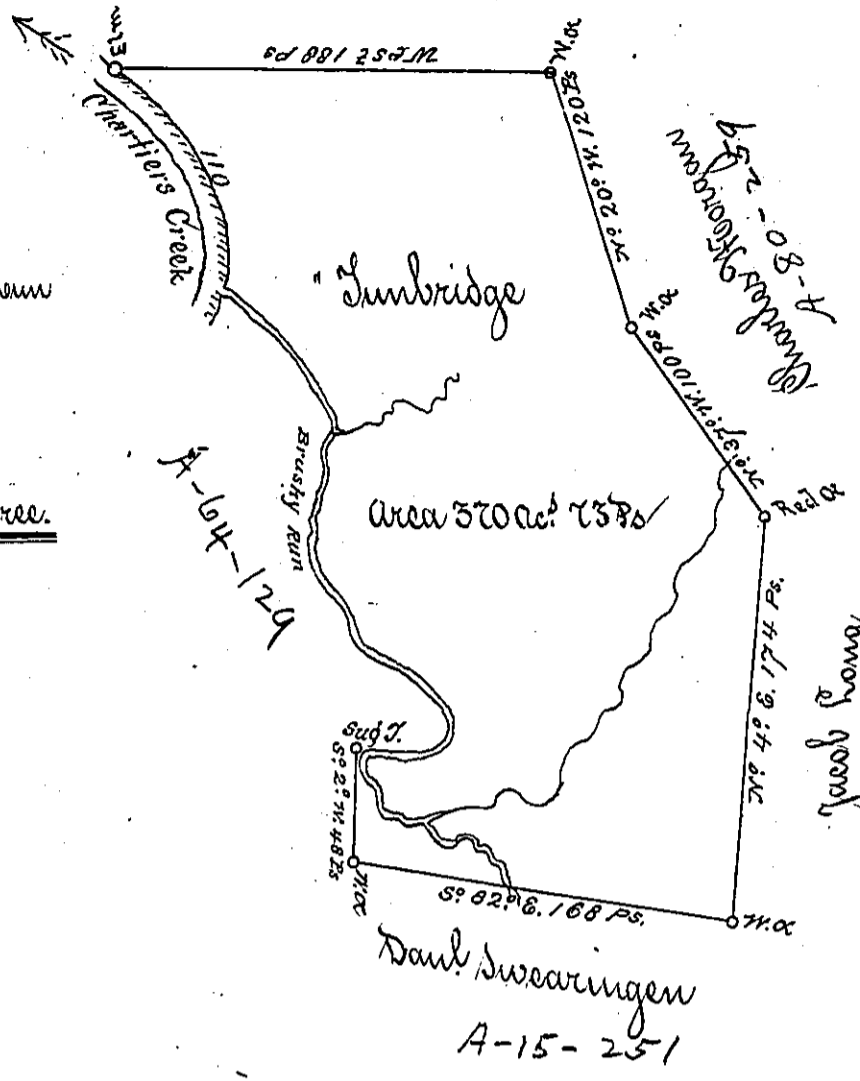


C-177-85
Colo. Jno. Campbell

Courses & Distances
up Chartiers Cr.

30° 48' E.	45 D.	110
29° E.	36 D.	
5° N.	29 D.	Eye South of Brushy Run, thence up & Run
48° E.	56 D.	
25° E.	26 D.	
10° N.	58 D.	
29° E.	49 D.	
57° E.	52 D.	
24° W.	22 D.	
82° W.	31 D. to the dug. Tree.	

294



Rec'd 15th May 82
Ent'd 18 Feb. 80

A Draught of a survey called "Sunbridge" situate on Chartiers Creek in Washington County, contains 370 ac. 73 7/8. Strict measure, executed July the 25th 1786 in consequence of a Certificate for 400 ac. granted to Robt. Thompson by the Commissrs. appointed by Virginia to adjust the Claims to unpatented Lands in ye. Counties Monongahela, Johanna and Ohio and duly entered with the County Surveyor as appears from the List of Entries transmitted from the Surveyors Office.

Jno. Lukens Esq. S. Genl.

Bresley Devill } D.S.
Heath Ritchie }

IN TESTIMONY that the above is a copy of the original remaining on file in the Department of Internal Affairs of Pennsylvania, made conformably to an Act of Assembly approved the 16th day of February, 1833, I have hereunto set my Hand and caused the Seal of said Department to be affixed at Harrisburg, this Seventh day of January 1902.

James W. Fatta
Secretary of Internal Affairs.